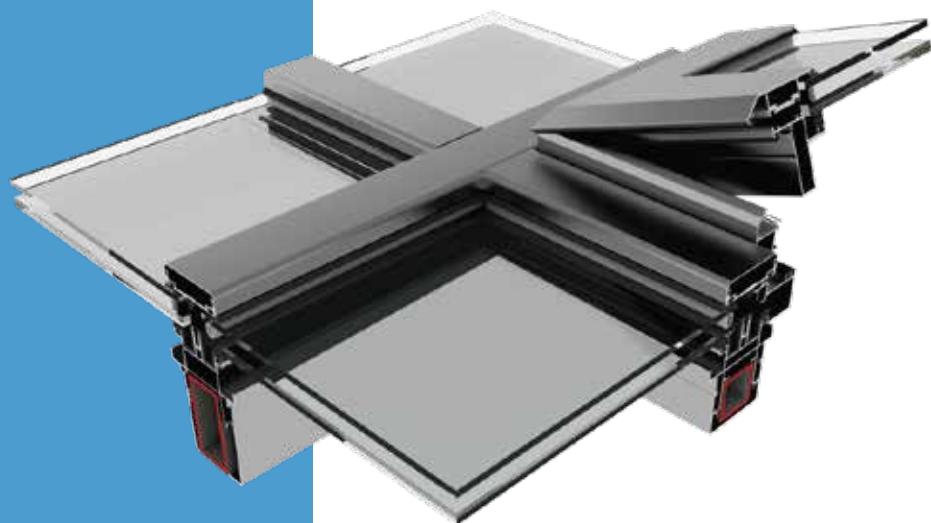


**Skylight System**



# **MSKY65**

**It is designed to create bright spaces using sun light.**



# MSKY65 Skylight System

## TECHNICAL PROPERTIES

<b>Profile Width</b>	65 mm
<b>Profile Wall Thickness</b>	1,8 - 2,5 mm
<b>Mullion Profile Height</b>	81 mm
<b>Transom Profile Height</b>	81 mm
<b>Mullion Max. Steel Dimension</b>	140 x 40 mm
<b>Transom Max. Steel Dimension</b>	140 x 40 mm
<b>Glazing Thickness</b>	10 - 45 mm

## APPLICATION OPTIONS

- Outward-Opening Motorized Sash Application
- Covered Facade
- Stick Facade
- Half - Covered Facade
- Cassette Stick Facade

